

## Bind Domain (Mac)

The purpose of this tutorial is to facilitate the use of Mac OS computers on the University network. Macs not bound (joined) to the Campus domain may have difficulties searching for and mapping to University file and print shares. Once you have bound your Mac to the Campus Domain, you should be able to search for network shares and network print queues by name rather than by IP address.

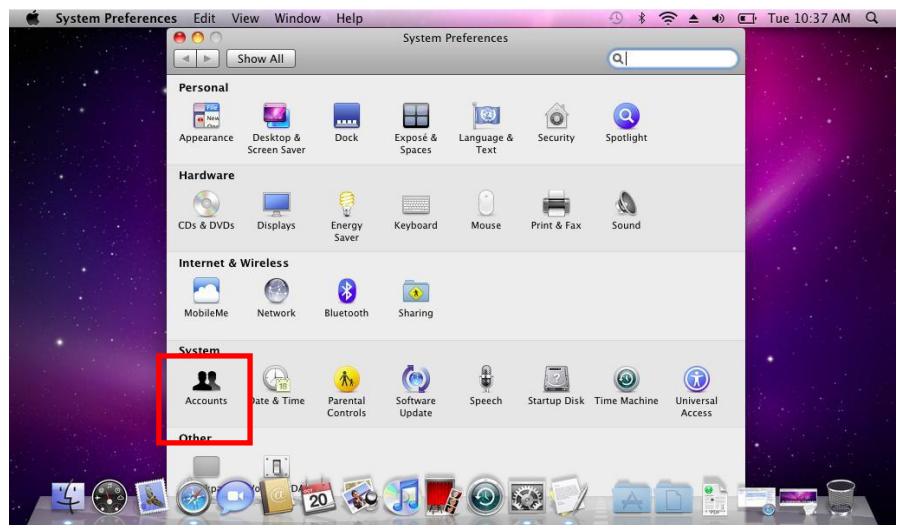
### Bind a Mac (OS 10.6) to Taylor's Domain

**Before you follow this guide**, contact 4040 (x84040), and request temporary use of a username and password with permissions to add a computer to Taylor's Domain.

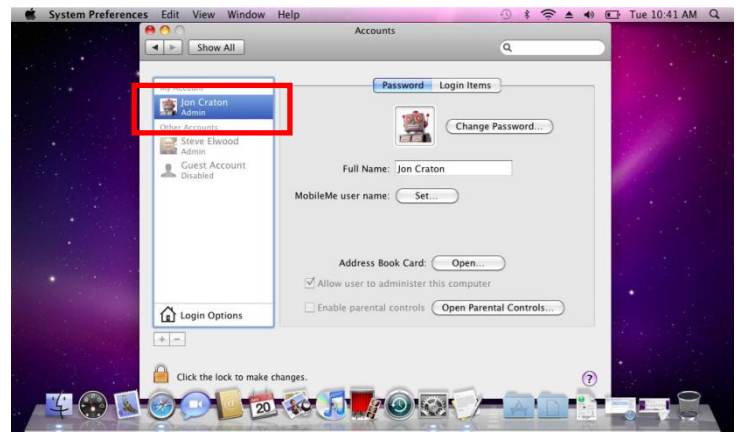
- Open System Preferences



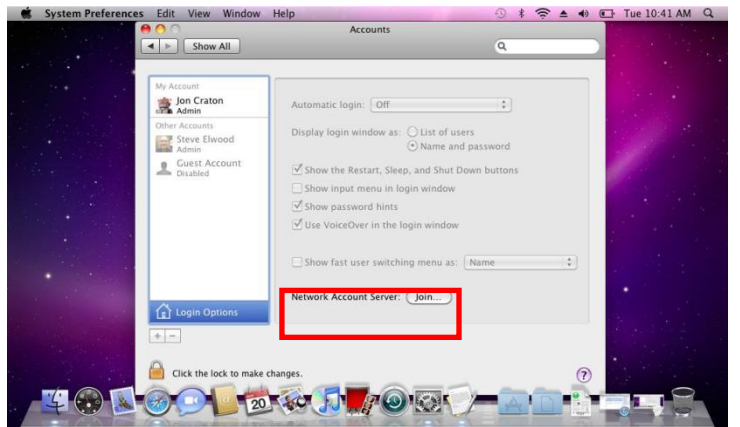
- Open Accounts



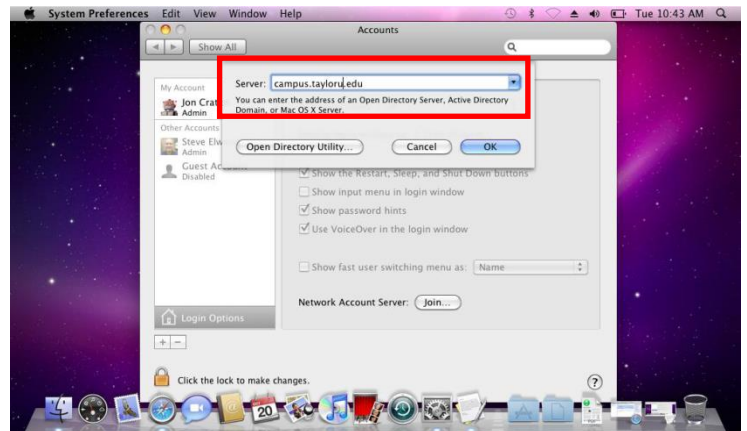
➤ Open Login Options



➤ Beside Network Account Server: Click Join

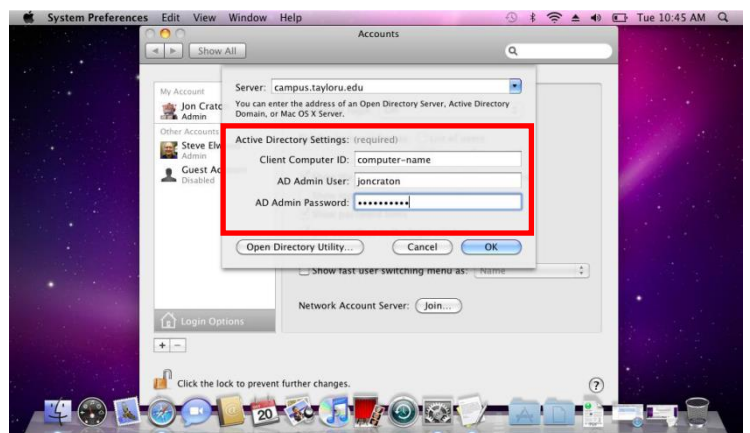


➤ Enter Server: campus.tayloru.edu

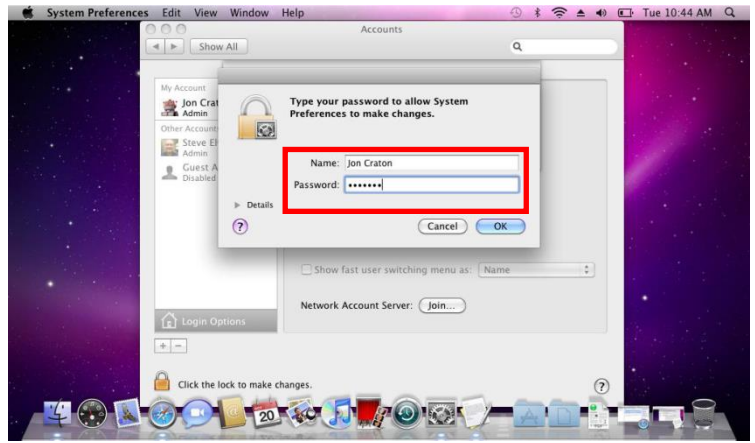


➤ Enter Active Directory Settings

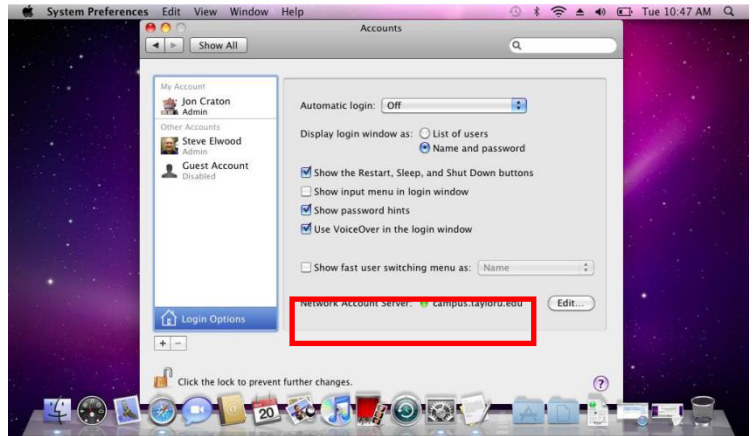
- Client Computer ID
- Use the computer name of your choice
- AD Admin User
- Use the username provided to you by Client Services
- AD Admin Password
- Use the password provided to you by Client Services



- Enter the Username and Password you use to log onto the computer



- You were successful if you see a Green Dot beside campus.tayloru.edu



## Finding Network Resources

Once a Mac has been bound to the Taylor Domain, you will be able to search for network shares and network print queues using its friendly name rather than by IP address. To do so:

- CMD+k in Finder -> smb://acadnas1/AcadPNF/username
- CMD+k in Finder -> smb://filesrv1/sharename - Can search and automatically authenticate

If you are logged into your Mac with a local account you will have to type your username and password (authenticate) to each network file and print share you attempt to access. Type your username in the format CAMPUS\UserName. If you are logged into your Mac with your Taylor username, you should be able to connect to network file and print shares without being prompted for your username and password.

## Apple Software

Taylor has an agreement with Apple which allows the upgrade of all Taylor-owned Macintoshes to the latest version of the Apple operating system. To access the software:

1. Do a Connect to Server in Finder. This is under the Go menu.
2. Enter smb://filesrv1/AppleISOs into the server address, and click Connect.
3. You will be prompted to enter your Taylor username and password.
4. There are 3 folders inside this share: OS X Snow Leopard, iLife 09, iWork 09. There is a .cdr disc image inside each folder that you can download to create an install disc.  
**NOTE: OS X Snow Leopard is 6.7 gig, so you will need to use a dual layer blank DVD-R to create your install disc).**
5. You can use Disk Utility to make your install disc by downloading the image you need and dragging that image into Disk Utility. Select the image you want to burn and click burn. The computer will prompt you for a blank disc.

If you have any questions on updating Apple software, please contact Josh Taylor.