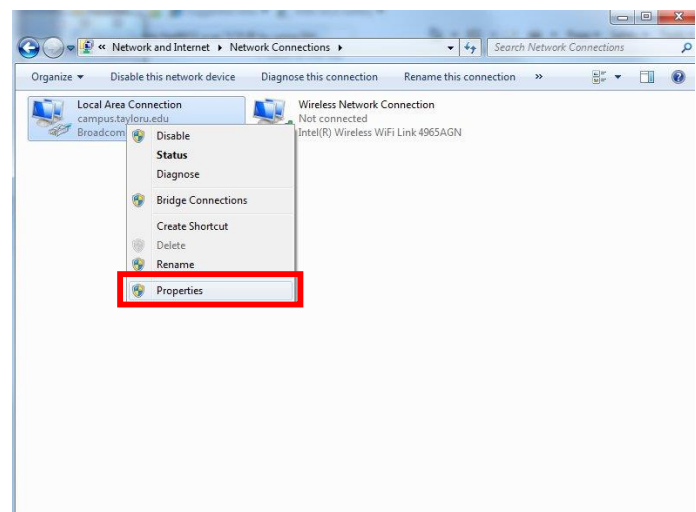
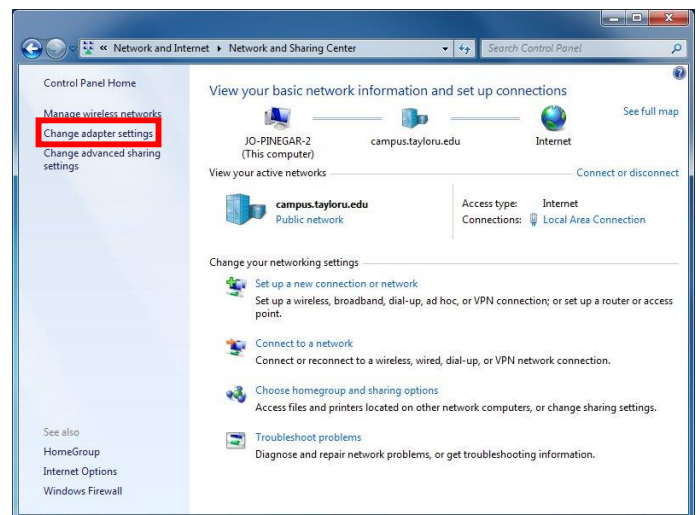
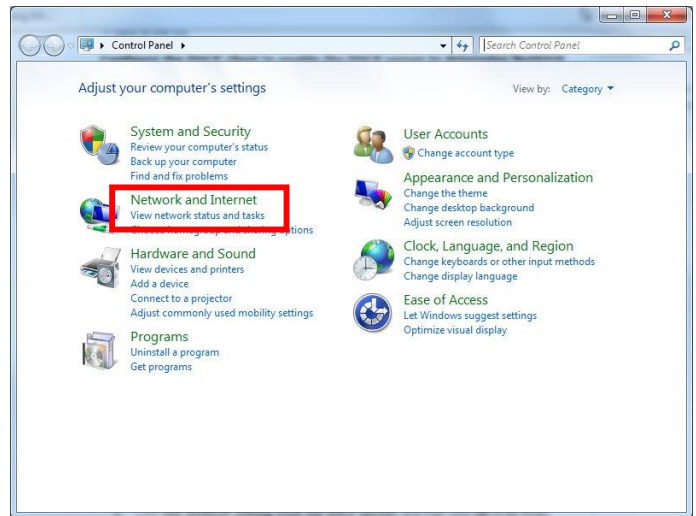


# Tech Training: Network DHCP

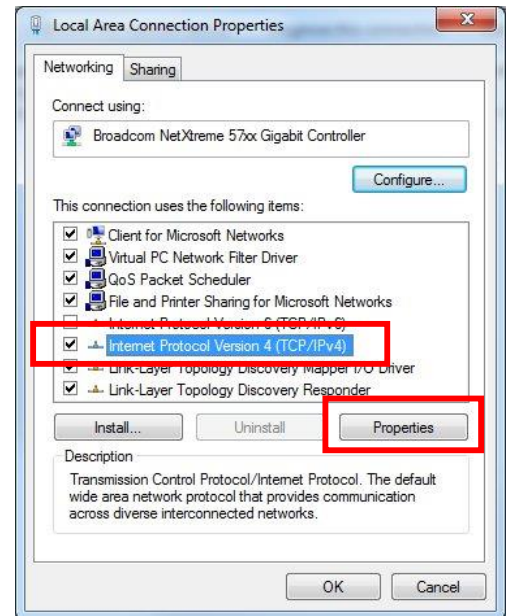
DHCP (Dynamic Host Configuration Protocol) allows a computer to easily connect to a network and is enabled by default on most operating systems. Taylor's network (T.U.C.A.N.) uses DHCP, so most computers connect to T.U.C.A.N. automatically. Computers that have been manually configured to work with another network will need to have those settings cleared and DHCP enabled.

## Windows

- Open Control Panel
  - Start > Control Panel
- Click 'View Network status and tasks'
- Click 'Change Adapter Settings'.
- Right-click the appropriate network adapter
  - Local Area Connection for wired
  - Wireless Network Connection for wireless
- Click Properties



- Select Internet Protocol Version 4
- Click Properties
- For use at Taylor, I.T. recommends that you disable Internet Protocol Version 6 (IPV6). This is optional.



If any information is entered in the “Use the following...” boxes, the computer has been manually configured to connect to another network. If your client plans to reconnect to that network, recommend they record this info for later use.

- Select ‘Obtain an IP address automatically’
- Select ‘Obtain DNS server address automatically’
- Click OK
- Restart. The device should now be configured to work with Taylor’s DHCP server.

