

Tech Training: Build or Burn Disc in Encore

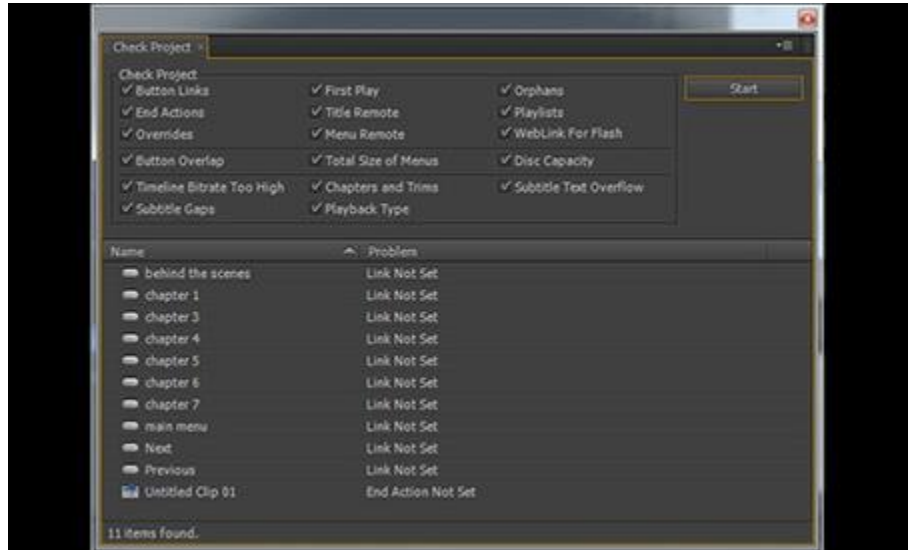
Test Before Burning

Check Project

If the DVD is set up and ready to burn to a disc, the project needs to be checked for errors. If errors are present, they could cause a DVD player to have issues with the disc.

In the top left window, choose the Build tab. Choose Check Project.

In the new window, click Start. If any errors appear, be sure to resolve them. If no errors appear, the project is ready to be burned to disc.

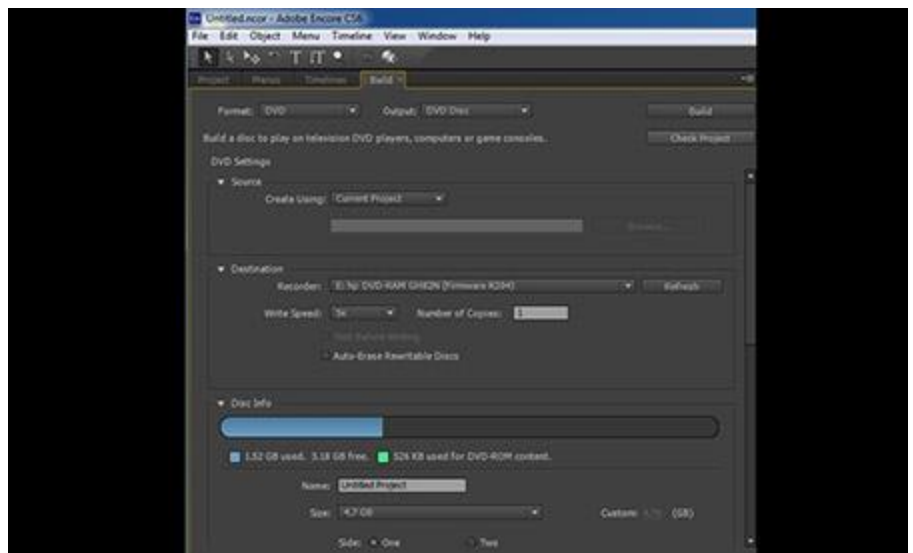


Build/Burn to Disc

Burn to Disc

If the project has been checked and all errors fixed, it's time to make an ISO file or burn the project to disc.

In the top left window, choose the Build tab. Choose format and output settings. Click Build.



Copyright Protection

We are bound by copyright laws, so if the video has copyright protection on it, we must add it to the discs we burn as well.

On the Build tab, scroll all the way to the bottom and change the CGMS to "No copies are allowed".

NOTE: Home videos do not need copyright protection added unless the customer requests it.

