

## Banner

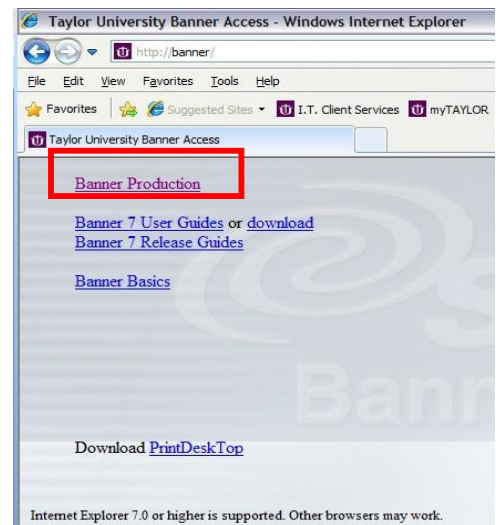
Banner is accessed through a browser such as Internet Explorer and requires the Java add-on to run. Upon accessing Banner for the first time, you may be prompted to install Java. At this writing, Java 8 is the current version. Once installed, it must be configured to work correctly with Banner.

- Use this link to download Java 8: <https://java.com/en/download/>
- Configure Java to use SSL 2.0 compatibility mode
  1. Control Panel > Java
  2. Move to Advanced tab
  3. Enable Use TLS 1.0, 1.1, and 1.2
  4. Disable Use SSL 2.0 compatible ClientHello format

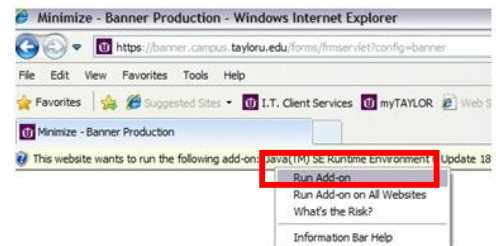
With this change made, Banner should load properly in IE and Firefox. As of Sept, 2015, Chrome no longer supports the use of Java.

Once Java has been configured, launch Banner

- Browse to <http://banner>
- Click Banner Production



- You may be prompted to 'Run Add-On'



- Log onto Banner using your Banner username and password. If you don't know your Banner username and password (not the same as your Taylor network username/password), contact Client Services at 84040.

